



User Manual for GC0101

Applicable to software package Version 7.22 and up

Revision: V7.0 Last Edited 7 April 2014



Before Attempting to connect or operate this product, please read these instructions in its entirety

This manual is intended to provide detailed technical specifications and explanations, to the basic user as well as the more technically-minded person. This manual is a live document, and will be updated often with new information. Please insure that you have the latest version, by checking our website at: <http://www.gsmcommander.com>.

Changelog:

SJD 7 Apr 2014 - Document created.

TABLE OF CONTENTS

Features.....	3
Specifications.....	4
System requirements.....	4
Dimensions.....	5
Installation.....	6
Environment.....	6
Power Supply.....	6
USB Port.....	6
SIM Card.....	6
Antenna.....	7
Software Installation.....	7
Mounting.....	10
Optically - Isolated Digital Inputs.....	10
Outputs.....	12
Battery Input.....	13
Status LEDs.....	14
Testing the Micro Commander.....	15
Configuration Via PC.....	15
Configuration via SMS.....	18
Set Administrator number.....	19
Clear Administrator number.....	19
Check Administrator number.....	19
Check Airtime.....	19
Add a Number to the list.....	19
Remove a Number from the list.....	20
Enable/Disable statements.....	20
Override GPRS Settings.....	20
Reset GPRS.....	20
Set GPRS logging interval.....	21
Reset Micro Commander.....	21
IF-THEN Behaviour statements.....	22
Supported IF Conditions.....	22
Supported THEN Actions.....	26
Multiple Actions to a Single IF Condition.....	28
Message Parameters.....	28
Timed operations.....	29
Prepaid Airtime voucher loading.....	29
Firmware Updates.....	30
Application Examples.....	31
Troubleshooting.....	33
Guarantee.....	35
Important Notice / Disclaimer.....	35
Manufacturer Contact Details.....	36

1. FEATURES

Model	Onboard Inputs	Onboard Outputs	Expandable Inputs/Outputs	Max Number of Statements	Max number of Phone Numbers	Max number of Messages	Max Length of Messages	GPRS Enabled	Temp probes Supported	0-10v Analog Inputs	Battery / Power Monitor	Extended Analogs	DTMF Decoder	SIM Card Slots
GC0101	1	1	1/1	10	128	16	127	YES*	0	0	YES	NO	NO	Single
GC0321	2	2	12/12	32	250	64	127	YES*	2	1	YES	NO	NO	Single
GC0641	2	2	22/22	64	512	128	127	YES	2	1	YES	YES	YES	Single
GC1281	2	2	32/32	128	512	128	127	YES	2	1	YES	YES	YES	Dual

Matrix Feature Descriptions

Model	The code used to define between the various units functionality and capabilities
Onboard Inputs	The number of inputs provided on the base unit itself
Onboard Outputs	The number of outputs provided on the base unit itself
Expandable Inputs/Outputs	The maximum total number of Inputs/Outputs that can be expanded to by fitting expansion units
Max Number of Statements	A measure of the amount of complexity that can be programmed into the unit. Each statement is of the form IF <ABC happens> THEN <do something>, such as IF Input 1 goes Active, THEN send "Generator Tripped" to "0831231234"
Max Number of Phone Numbers	The maximum total number of phone numbers that can be programmed into the unit
Max Number of Messages	The maximum total number of messages that can be programmed into the unit
Max Number of Statements	The maximum total number of behaviour statements that can be programmed into the unit
GPRS Enabled	If yes, the unit is able to be registered onto the AirDrive Platform which can allow it to log it's status, log it's events, have remote config and remote output control via GPRS.
Temp Probes Supported	The number of temperature probes the base unit can accept
0-10v Analog Inputs	The number of analog Inputs available
Battery / Power Monitor	The ability to detect power failures and monitor a connected battery.
Extended Analogs	Allows the possibility to connect an Analog Expansion unit which will provide an additional 8 analog inputs
DTMF Decoder	If YES, the unit is able to recognize (and respond to) key presses on a remote phone during a voice call.
SIM Card Slots	If Single, the unit has only a single SIMcard slot. If the SIMcard in that slot becomes faulty or the associated network goes down, the unit loses communication ability. If Dual, the unit can switch over to a secondary SIMcard if it detects problems on the primary SIMcard, thus greatly enhancing reliability.

* Only able to view the current status of the unit via Airdrive.

2. SPECIFICATIONS

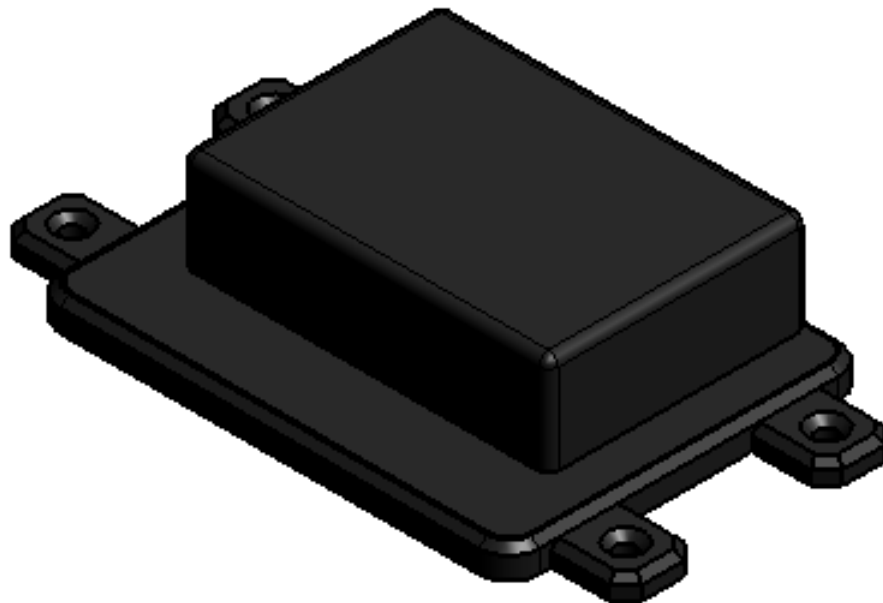
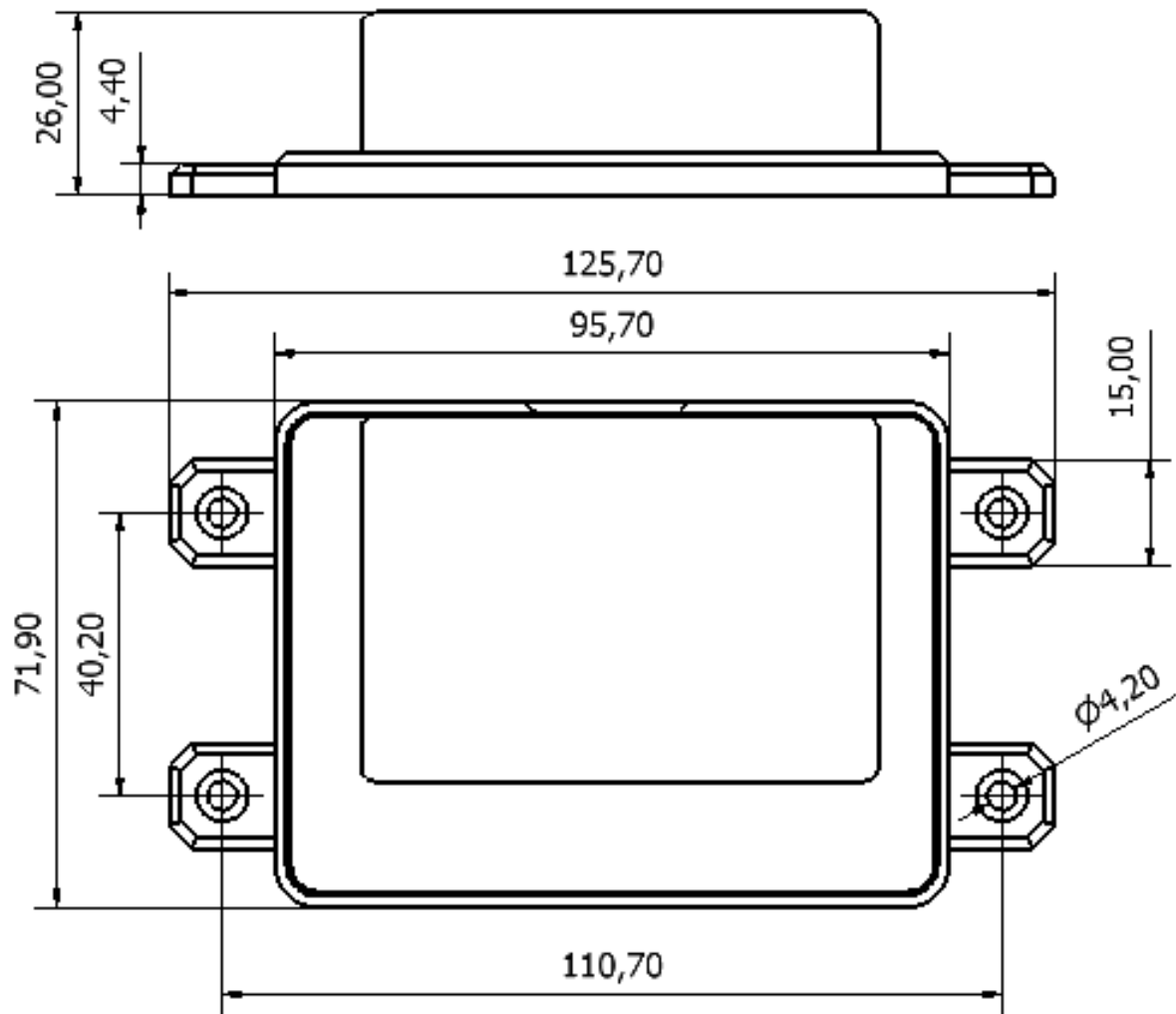
Weight	100gram
Dimensions	125,7 x 71,9 x 26mm
Power Supply	10-14V DC via DC Jack
Power Consumption	~ 2.5W
Current Consumption	~ 50mA at idle (no inputs or outputs active)
Operating Temperature	-10°C to +60°C
Storage Temperature	-20°C to +80°C
Digital Input	Opto-isolated. Inputs draw 2 - 45mA, depending on voltage. Can accept any DC signals of any type, including: <ul style="list-style-type: none">➤ Dry Contacts➤ Open Collector (NPN)➤ Closed Collector (PNP)➤ DC Voltage (3 - 20V)
Digital Output	1 x SPDT Relay Contact rating: 8Amp DC (10 - 48V) or 4amp AC (110 - 400V). Expandable to maximum of 32*
IO Connector type	Pluggable terminals
GSM-850/900MHz Output Power	Class 4 +33dBm (2W)
GSM-850/900MHz Sensitivity	-107dBm
GSM-1800/PCS-1900 Output Power	Class 1 +30dBm (1W)
GSM-1800/PCS-1900 Sensitivity	-106dBm

3. SYSTEM REQUIREMENTS

The setup software requires a PC with the following specifications:

Operating system	Win2000 / WinXP / Vista / Win7 / Win8
Computer Architecture	Pentium 2 or higher IBM compatible PC
Disk space	20MB
Ports	1 x free USB port

4. DIMENSIONS




5. INSTALLATION

5.1. Environment

Due to the make-up of the Micro Commander and its electronics, we **STRONGLY** advise that it not be installed in close proximity to a variable speed drive or any other electrically noisy equipment. **DO NOT** install the Micro Commander into a metal enclosure unless an antenna is mounted on the outside of the enclosure.

5.2. Power Supply

The Micro Commander has a 2.1mm DC jack connector where a power supply must be connected. The power supply should have the following specifications:

- Output Voltage: 14V nominal
- Output Current: 0.5A
- Polarity: 

A suitable power supply is supplied with the retail product.

In industrial applications, it is advised that the Micro Commander be installed into its own metal housing and be powered from a separate power supply with a DC Filter. (As opposed to sharing one with other equipment).

Please Note: While the Micro Commander has fairly rugged internal power supply circuitry, no special provision for lightning protection is made. If the Micro Commander is used in an area that is prone to thunderstorms, it is advisable to use a commercially available lightning suppressor (The same applies to inputs or outputs that are connected to wires longer than 2 or 3 meters).

The guarantee does not cover damage resulting from lightning strikes!

5.3. USB Port

The Micro Commander provides a USB port that connects to a PC using the supplied USB cable. This allows the PC to configure the unit.

5.4. SIM Card

The Micro Commander accepts a standard GSM SIM card from any network. The SIM card may be prepaid or on contract. If the SIM Card is purchased as part of a prepaid plan, ensure that the card is loaded with sufficient airtime.

WARNING: DO NOT Insert or remove the SIM card while the Micro Commander is powered!!

Note that airtime will decrease with every SMS that is sent from the unit. The unit can automatically detect if the airtime is running low. It is user's responsibility to make sure that the airtime is topped up. See your network's documentation on how to purchase and load airtime.

The SIM card is fitted into the back of the unit, as indicated by the legend on the enclosure. The SIM card will click into place and is removed simply by pressing against it. The card will pop out with a "click" sound, ready to be completely removed.

Before you install your SIM Card:

- Install the SIM card into a normal cellular phone
- Verify that there is **no SIM PIN** enabled (The phone must not ask for a PIN when switched on with this SIM card inside) If the phone does request a PIN, you need to enter the correct pin so that the phone can start, and then disable the SIM Card PIN. See your cellphone documentation on how this can be done.
- Verify that you are able to **send an SMS** message.

The SIM card will now work with the Micro Commander.

Please Note: If you are using a prepaid SIM card, be aware that if the SIM card has not produced a billable event on the network for a long period of time (typically 3 months), the card will be deactivated by the network, and the SIM card then becomes useless. It is strongly recommended that you configure the Micro Commander to send you an SMS every now and then (once or twice a week) so that your SIM card remains active on the network.

The Micro Commander can **ONLY** check the airtime of a **PREPAID** SIM card.

5.5. Antenna

The Micro Commander is supplied with a basic antenna operating in the **GSM 900MHz** and **1800MHz** frequency bands. Screw the antenna to its connector on the unit (only finger-tight). Verify using a cellphone, that there is sufficient signal at the proposed installation site. On a phone with a 4 or 5-bar signal strength indicator, you should have at least 1-2 bars of signal.

If the signal is too weak, the Micro Commander may have trouble sending or receiving SMS messages. In these cases, try and find a better location, or order one of our special antennas.

If you are outside South Africa, you may require a different antenna.

The other frequency bands are:

- **GSM 850MHz**
- **PCS-1900MHz**

Your network will be able to tell you which frequency band(s) are in use. Contact your local electronics supplier about antennas that operate in the 850MHz or 1900MHz bands.

Contact **Polygon Technologies** with your request for a special antenna.

5.6. Software Installation

The latest software is supplied on a CD with the product and is also available to download from our website for free at: <http://www.gsmcommander.com/>

The setup program will start automatically, or if the autorun feature is not enabled on your PC, you may run the “setup.exe” executable file on the CD to start the setup process. The software has been tested to work on Windows XP, Windows Vista, Win7, Win8.

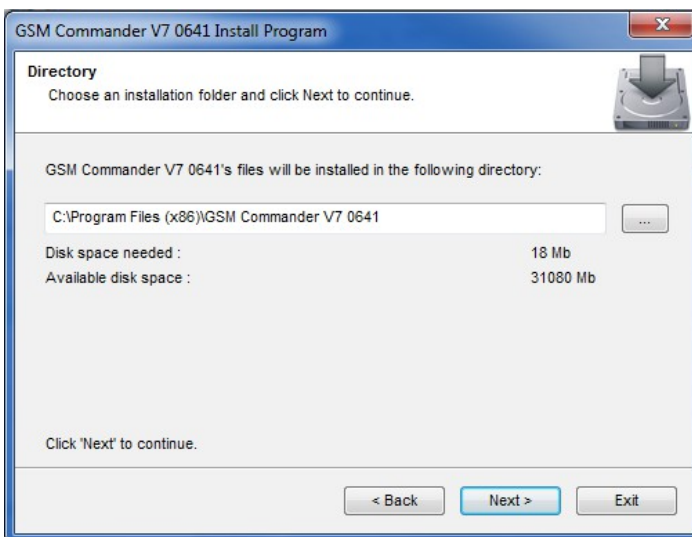
The setup process for Windows 7 has been documented here, but the process is similar in the other versions of Windows.

Screen 1:



Click 

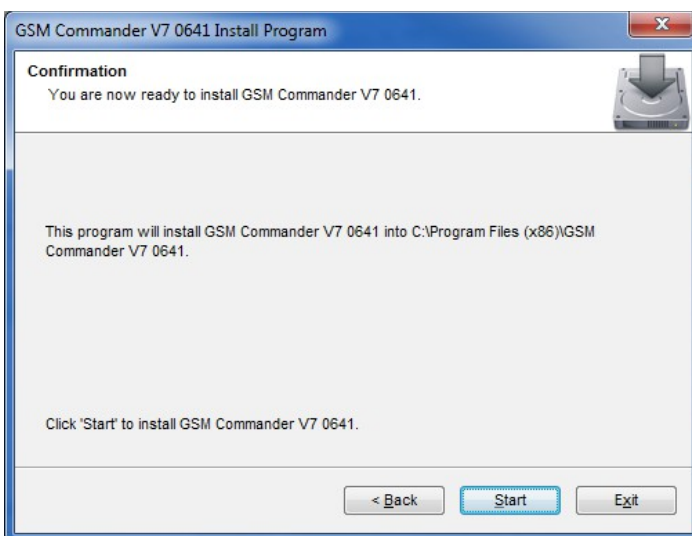
Screen 2:



It is recommended that you leave the install path at the default location.

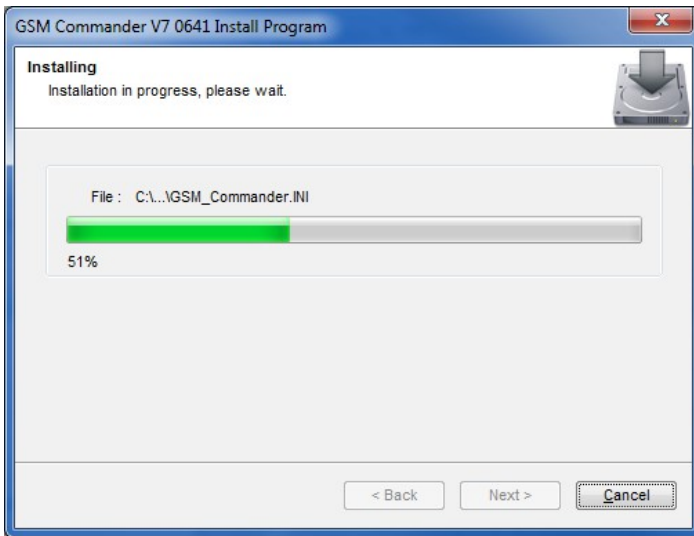
Click 

Screen 3:



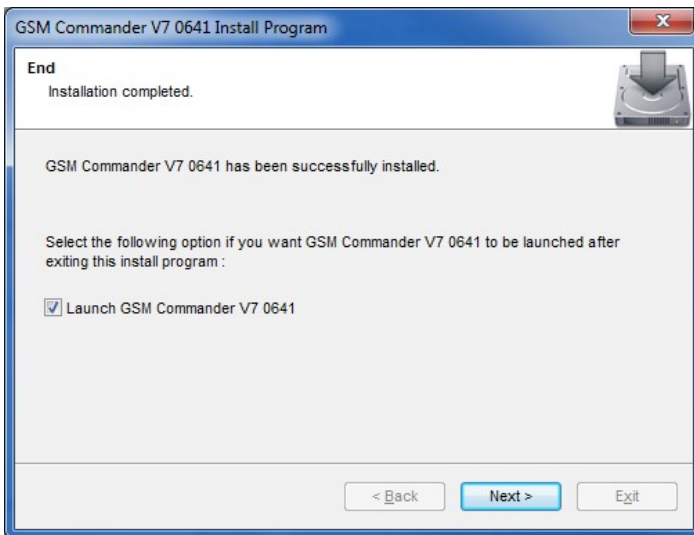
Click 

Screen 4:



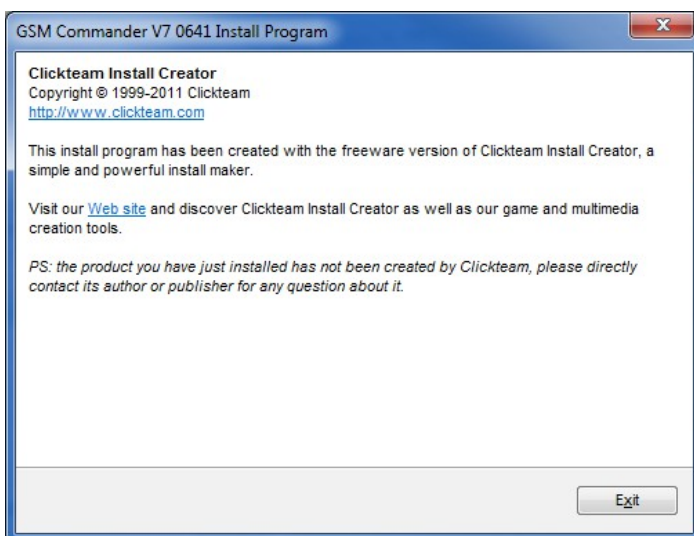
Installation is in progress.

Screen 5:



Installation has been completed successfully. Click **Next >**

Screen 6:



Click **Exit**

5.7. Mounting

The Micro Commander is housed in a very durable ABS casing which has 4 protruding tabs, which allows it to be mounted firmly to any surface by means of a screw. There is also a DINrail mounting kit available separately.

Please note: The Micro Commander is not water- or weatherproof. The Micro Commander must be mounted indoors, or inside an appropriate IP65-rated weatherproof enclosure. The guarantee does not cover damage resulting from water ingress! **DO NOT** mount the Micro Commander inside a steel cabinet, unless you also mount a separate antenna on the outside of the cabinet.

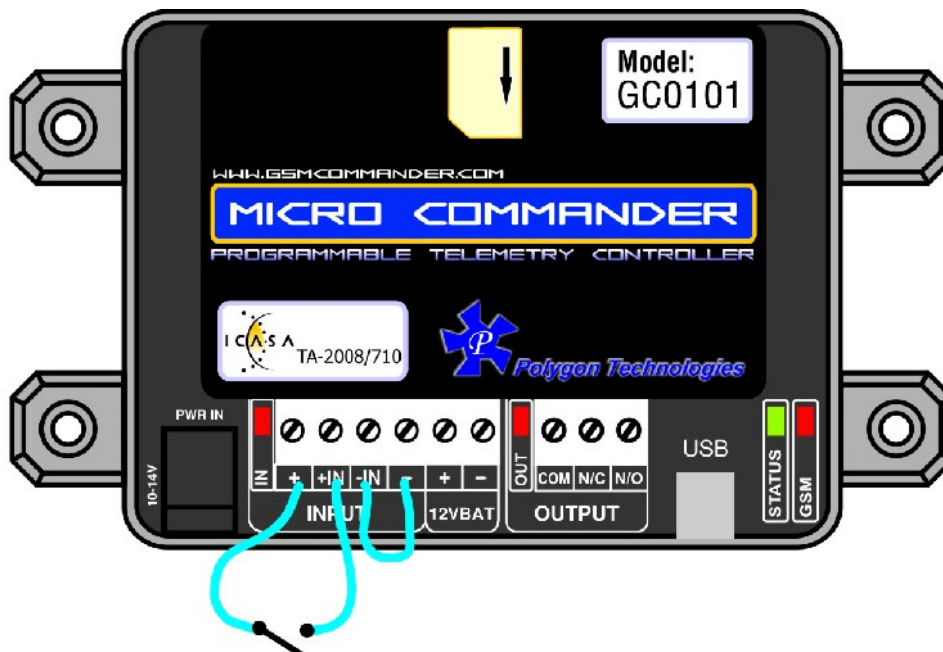
Suitable antennas can be ordered from **Polygon Technologies**.

5.8. Optically - Isolated Digital Inputs

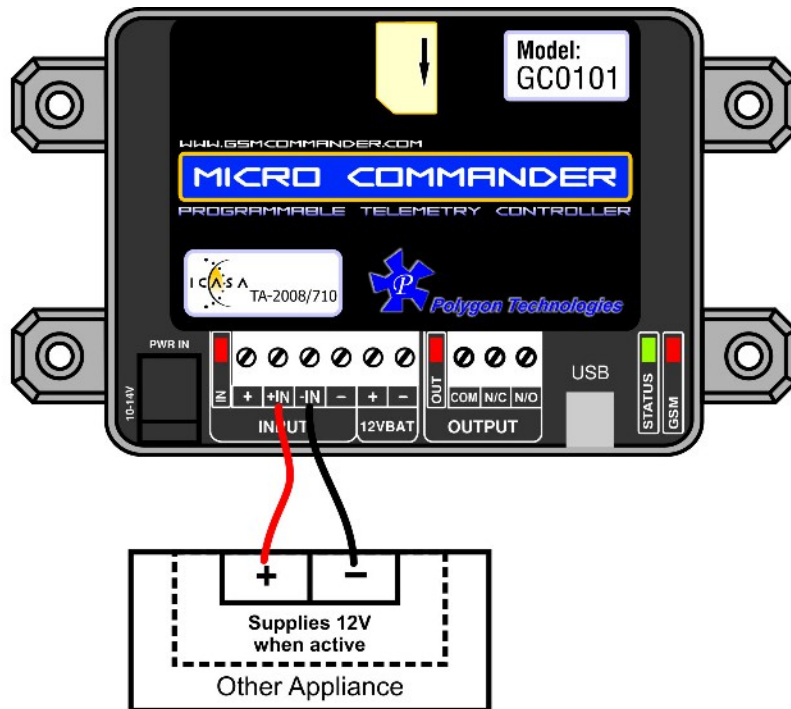
The Micro Commander itself provides 1 signal inputs. The input has the following 4 terminals:

- +** - Internal positive supply (14V)
- +IN** - Positive input
- IN** - Negative input
- - Internal negative supply (Zero volts)

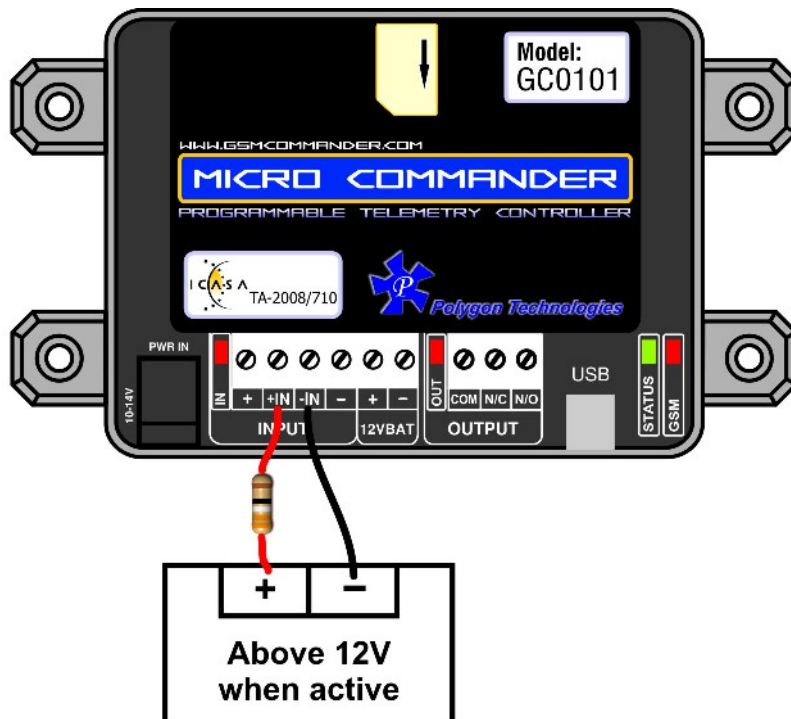
To connect a switch or contact to an input, simply connect the switch between the + and +IN terminals, and a wire between the - and -IN terminals. The reverse is just as suitable, i.e. that you connect a wire between + and +IN and place the switch between - and -IN.



You may need an input to activate when power is supplied from some other unit. A good example will be a burglar alarm that applies power to the wires going to the siren. In such a case, it will be a simple matter of connecting the positive wire to the +IN input, and the negative wire to the -IN input.



Please keep in mind that this input is designed for 3V to 20V operation. If you require to connect a voltage above 20V to these terminals, you should connect a resistor in series with the input, as shown below.



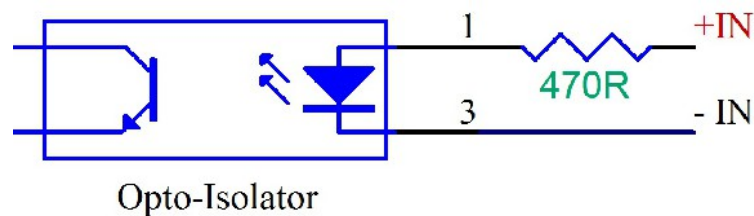
Input Voltage range
20V - 40V DC

Required Series resistor:
1K ohm

The + and - terminals are connected to the input power supply of the Micro Commander, and are provided to make it easy to connect dry contacts to the Micro Commander.

If the power supply is 14V, the voltage at the + and - terminals will be slightly less at about 13.8V (due to an internal series diode for reverse polarity protection).

Here is a schematic of the input circuit used on the Micro Commander:



Drawing power for external hardware from the power terminals on the input:

One should not attempt to draw more than 50-100mA in total from the power terminals at the inputs on the Micro Commander.

5.9. Outputs

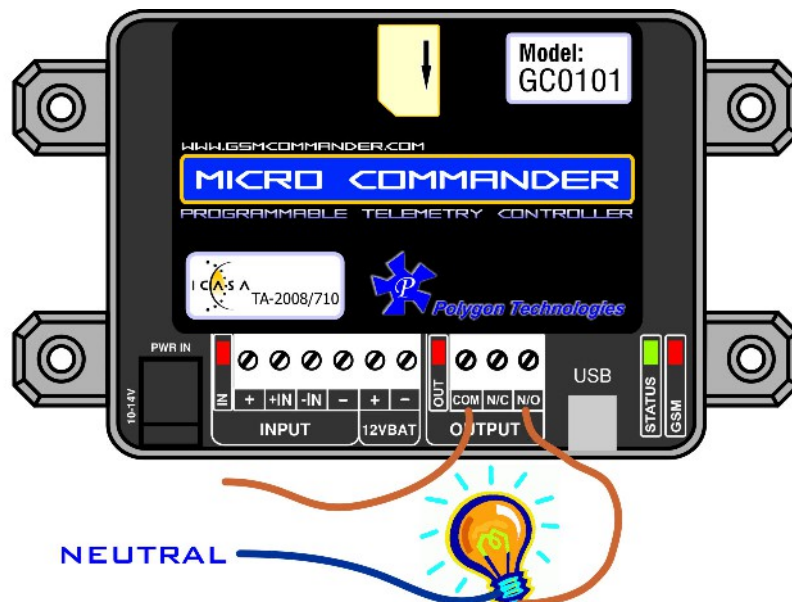
The Micro Commander itself provides 1 x 8A (DC) Relay outputs. The output has the following 3 terminals:

Each of these inputs each have 3 terminals associated with them:

- COM - Common Terminal
- N/C - Normally Closed Terminal
- N/O - Normally Open Terminal

When the output is off, the **COM** and **N/C** terminals will be internally connected to each other. When the output is on, the **COM** and **N/O** terminals will be internally connected to each other.

Note that there are small LED indicators next to the output terminals, that will show if the output is ON or OFF. (if the LED is on, then the output is also on) In the picture below, the output is connected so that the lamp will light up when the output is on.



This output can be used to control devices and appliances, and is rated for 8A DC. It may be used to control most types of electrical loads, excluding AC motors above 500W.

Here are some examples of things you CAN directly switch on and off using the output on the Micro Commander:

- Gate motors and any other motor less than 500W
- Mains Lights (energy savers, incandescents, halogens) (maximum 750W)

Here are some examples of things that you can **NOT** directly switch on and off using the output on the Micro Commander:

- Ovens, Heaters, kettles
- Pumps and motors above 500W

Please note: Keep in mind that if required, the above loads can easily be switched on and off using an externally connected relay or contactor.

5.10. Battery Input

The Micro Commander provides connections for an external rechargeable 12V battery. Under normal circumstances, the Micro Commander will trickle-charge the battery at a current of about 60mA. In the case of a power failure, the Micro Commander then starts drawing power from the battery to continue operating.

In the case of a power failure, the Micro Commander can continue operating from the external battery. The unit can be configured to perform certain tasks (like sending a warning SMS) if the battery voltage falls below a certain point, and can also perform tasks in the case of a power failure. (Like sending an SMS and switching on emergency lighting)

In cases where the Micro Commander is used in conjunction with a large system with its own battery (such as UPS systems), the battery terminals of the Micro Commander can be safely connected to the large (12V) battery, and the Micro Commander can then monitor the battery voltage for you (only while power is NOT supplied to the power input connector).

Also, in cases where the user may want to connect other hardware directly to the battery, be aware that this will probably drain the battery, since the charging current from the Micro Commander is so low. Other hardware should rather be connected to the power terminals provided at the inputs. (*See section 5.8 for more information on this*).

Internal to the Micro Commander, the Battery terminal is wired with a 47ohm resistor between the + Batt terminal and the positive power supplied to the Micro Commander. There is a diode in parallel with this resistor (cathode facing to the battery) to allow the Micro Commander to draw power from the battery under power-fail conditions.

A resettable fuse has now also been added to give the Battery terminal added protection against voltage spikes and short circuits.

Suitable batteries are available from **Polygon Technologies**.

5.11. Status LEDs

The Micro Commander has 2 LEDs to show the current status of the Micro Commander. The red LED, labelled “GSM”, shows the status of the internal GSM cellular engine, while the green LED, labelled “STATUS”, shows the status of the Micro Commander as a whole.

The following table shows how one can determine the current status:

GREEN LED (STATUS)

- Solid On



: Busy Booting

- on for 500ms, off for 500ms (slow flash)



: All OK

- on for 200ms, off for 200ms (fast flash)



: Airtime running low

- on for 10ms, off for 500ms (2 short flashes per second)



: Signal is low

- on for 50ms, off for 50ms (very fast flash)



: Problem with GSM engine

- on for 100ms, off for 500ms, on for 100ms, off for 500ms,
on for 500ms, off for 500ms (2 short and 1 long flash)



: Setup is corrupt

- on for 50ms, off for 100ms, on for 50ms, off for 100ms,
on for 50ms, off for 1000ms (3 short flashes)



: Supply voltage below 9,5V

RED LED (GSM)

- OFF

: GSM engine OFF

- on for 600ms, off for 600ms (1 flash per second)



: GSM engine not finding network

- on for 75ms, off for 3000ms (1 flash every 3 seconds)



: GSM engine registered OK

- on for 600ms, off for 600ms (1 flash per second)



: GSM busy with a voice-call

5.12. Testing the Micro Commander

5.12.1. Status Request

The Micro Commander (even with a blank configuration) has a built-in test feature. If the Micro Commander receives “TEST GSMC” as an SMS message, it will reply to the number that sent the message, with the following text:

DT=01/01/2013-12:00:00 < Indicates current date & time of the Micro Commander

Sig=68% < Indicates the received signal strength

Airt=35 < Indicates the amount of airtime remaining

FW=7.14 < Indicates the firmware version

SN=140101-30225 < Indicates the serial number

PWR=On < Indicates status of mains power

Batt=13.2V < Indicates voltage of battery (if connected)

IN1= 0 < Indicates status of inputs 1 and 2 (0 = active, 1 = inactive)

OUT1 = 0 < Indicates status of outputs1 and 2 (0 = active, 1 = inactive)

Please Note: The airtime remaining will be displayed as “Airt=???” if airtime checking has been disabled or the incorrect network operator has been chosen in the current setup.

6. CONFIGURATION VIA PC

6.1. Basics

The following is required to configure the Micro Commander:

- A PC running Windows XP / Vista / Windows 7 / Windows 8
- Setup utility installed on the PC (*Available on the CD supplied with the product*)
- USB cable (*Provided*)
- Power supply (*See 5.2*)
- Antenna (*See 5.5*)
- SIM card(s) (*See 5.4*)

Please note: The Micro Commander will eventually startup if no SIM card is inserted, but there would be no GSM functionality, which means none of the GSM features will work.

Follow these steps:

Step 1:

Insert SIM card into unit

Step 2:

Connect Micro Commander to PC via the supplied USB cable

Step 3:

Connect power to the Micro Commander

Step 4:

Run the Utility (Start > All Programs > GSM Commander V7 0101 > Configure GSM Commander)



The software will show this screen when started. Here you can select whether you would prefer opening an existing setup from a file on your PC, retrieve the setup currently on the Micro Commander, just open to the main screen or launch an older version of the software.

6.2. Software Tabs

The **SmartSetup** utility software has been designed to make the configuration process of the Micro Commander as easy and user-friendly as possible.

With this in mind the software has been divided into the following tabs:

- Numbers
- Messages
- Behaviour Statements
- Settings
- IO Names
- Lock Setup
- Status

6.2.1. Numbers Tab

This tab allows the user to program the Micro Commander with the numbers they wish the Micro Commander to communicate with and listen to. The FIRST number in the list is defined as the ADMINISTRATOR number. Only the Administrator may send configuration SMS messages to the device.

Please Note: The user should adjust the sliding bar at the bottom of the screen to reserve space for numbers to be added/removed via SMS. (See sec 7.6)

6.2.2. Messages Tab

This tab allows the user to program the Micro Commander with the messages they wish the Micro Commander to respond to and respond with either via SMS, serial port or GPRS*.

6.2.3. Behaviour Statements Tab

This tab allows the user to program the Micro Commander with a number of trigger conditions. (See chapter 8)

6.2.4. Settings Tab

This tab allows the user to configure the following:

- Network Service and GPRS Settings
- Enable/Disable Simcard Pin
- Enable/Disable Periodic Automatic GSM Reset
- Show Debug Comms
- Manually send an SMS via the Micro Commander
- Write Recipient and IO Names to device
- Change application size (pixel dimensions of software)

6.2.5. IO Names Tab

This tab allows the user to rename the input and output to something that means a little more.

Please Note: These IO Name changes will be stored in the setup that is saved to file, but will **ONLY** be stored in the setup that is saved to the Micro Commander if enabled under Settings Tab.

6.2.6. Lock Setup

This tab allows the user to password protect tabs from being accessed as well as the option to save a new setup to the Micro Commander. This feature comes in handy when an installer doesn't want the end-user to be able to make changes under certain tabs.

6.2.7. Status Tab

This tab allows the user to monitor the status of Micro Commander (while connected to PC) with regards to:

- Active SIM
- GSM Status
- GPRS Status
- Power Status
- Current Battery Voltage
- Signal Strength
- Airtime Balance Available (provided network settings are correct)
- Date / Time
- Status of Behaviour Statements
- Inputs/Outputs Status

7. CONFIGURATION VIA SMS

The Micro Commander provides functionality to provide some configuration changes to be done via SMS message (from the administrator number only). Note that the unit cannot be setup by SMS only. A PC is still required to perform the initial setup. Thereafter, some simple changes to the setup may be done using SMS messages.

Please note: The Configuration SMS is NOT case sensitive.

The following operations can be performed via SMS message:

- Set Administrator number
- Clear Administrator number
- Check Administrator number
- Check Airtime
- Add a number to the list
- Remove a number from the list
- Enable/Disable statements
- Configure GPRS settings
- Reset GPRS
- Set GPRS logging interval
- Reset Micro Commander

7.1. Set Administrator number

This command can ONLY be sent from the administrator number(if one exists), otherwise it can be sent from any number .

ADMIN SETADM 0831234567

This will store “0831234567” as the new administrator number. The Micro Commander will reply with a confirmation message.

7.2. Clear Administrator number

This command can ONLY be sent from the administrator number.

ADMIN CLRADM

This will remove the current administrator number. The Micro Commander will reply with a confirmation message.

7.3. Check Administrator number

This command can be sent from ANY number, and is useful to determine which number is the correct administrator number.

ADMIN?

The Micro Commander will reply with the administrator number in the reply message.

7.4. Check Airtime

This command can be sent from ANY number, and is useful to check the amount of airtime remaining on the unit. To check airtime, you must send:

ATCHECK

The Micro Commander will reply with a message detailing the current airtime.

7.5. Add a Number to the list*

This command can only be sent from the administrator number. To add a number to the list, the administrator must send:

ADMIN ADDN 0831234567

The Micro Commander will reply with a confirmation message.

***Please Note:** The value predefined by the user via the software under the “Numbers Tab” (as illustrated below), will determine how many numbers are able to be added and removed by means of SMS.

Set number of numbers to reserve for adding/removing per sms here:

7.6. Remove a Number from the list

This command can only be sent from the administrator number. To remove a number (+27831234567) from the list, the administrator must send:

```
ADMIN REMN 0831234567
```

The Micro Commander will reply with a confirmation message.

7.7. Enable/Disable statements

This command can only be sent from the administrator number. To enable or disable a specific statement in the setup on the Micro Commander, the administrator must send:

```
ADMIN STATEMENT 8 ON      or      ADMIN STATEMENT 8 OFF
```

This will either enable(ON) or disable(OFF) statement 8 respectively. The Micro Commander will reply with a confirmation message.

7.8. Override GPRS Settings

This set of commands allows you to override the GPRS settings that the Micro Commander may have been configured with and can only be sent from the administrator number. These override settings are non-volatile, which means their effect will remain after power has been cycled.

To configure the Micro Commander to connect to server via a South African network you must send:

```
ADMIN GPRSSETUP.PRODUCTION
```

To turn off GPRS functionality you must send:

```
ADMIN GPRSSETUP.OFF
```

To disable any override, and go back to whatever settings were specified by the configuration, you must send:

```
ADMIN GPRSSETUP.SETUP
```

If you need to specify the username and password of your APN(Access Point Network) you must send:

```
ADMIN SETSERVER: "<apn>" "<username>" "<password>" "UCGPBUPGVQZG"
```

The Micro Commander will reply with a confirmation message for each of the above.

7.9. Reset GPRS

This command can only be sent from the administrator number. To re-open GPRS you must send:

```
RESET GPRS
```

The Micro Commander will reply with a confirmation message.

7.10. Set GPRS logging interval

This set of commands allows you to override the GPRS logging interval that the GSM Commander may have been configured with and can only be sent from the administrator number. These override settings are non-volatile, which means their effect will remain after power has been cycled.

ADMIN GPRSSETUP.LOG5

(GPRS logging interval will be set to every 5 minutes)

ADMIN GPRSSETUP.LOG10

(GPRS logging interval will be set to every 10 minutes)

ADMIN GPRSSETUP.LOG15

(GPRS logging interval will be set to every 15 minutes)

ADMIN GPRSSETUP.LOG30

(GPRS logging interval will be set to every 30 minutes)

The GSM Commander will reply with a confirmation message.

7.11. Reset Micro Commander

This command can be sent from ANY number. To reset the Micro Commander you must send:

RESET GSMC

The Micro Commander will **NOT** reply with a confirmation message.

8. IF-THEN BEHAVIOUR STATEMENTS

The Micro Commander is configured by defining a number of behaviour statements. Each statement takes the form of an IF-THEN pair. You are thus able to select certain trigger conditions that will cause desired actions to be performed. Any combination of IF and THEN parts can be assembled into complete statements using the configuration software. The Micro Commander can accept up to 10 separate behaviour statements

8.1. Supported IF Conditions

8.1.1. IF a Message is Received

A statement containing this IF condition, will trigger on the arrival of a SMS message.

The user has a choice of the following four options:

- From Any number Containing Anything or a Specific Message
- From Any number appearing in the list Containing Anything or a Specific Message
- From a Specific number in the list Containing Anything or a Specific Message

Thus, if the user chooses “From Any number Containing Anything or a Specific Message”, then literally any SMS(if not specified) from any number will cause the statement to trigger. This will include SMS messages from private (withheld) numbers.

Note the word “containing” in this condition. If you have a trigger condition like this one:

IF a Message is Received From Any number containing “Apple” is received from XYZ, then <ACTION>,
The statement will trigger on arrival of any of the following messages:

“Apple”
“APPLE”
“The Red apple”

You will notice that trigger text strings are NOT case sensitive. Both “Apple” and “APPLE” will work fine. It is also important to note that you can trigger multiple statements with different trigger texts, in the same SMS. For example, if you have the following two statements:

IF a Message is Received From Any number containing “Apple” is received from XYZ, then <ACTION>
IF a Message is Received From Any number containing “eat” is received from XYZ, then <ACTION>

These statements will both be triggered if “I eat an Apple” is received via SMS.

Please Note: If “From Any number appearing in the list Containing Anything or a Specific Message” or “From a Specific number in the list Containing Anything or a Specific Message” are selected, and an SMS arrives from a private number, the statement will not trigger.

8.1.2. IF Voice Call is Received (Call Options : Hang up or Stay on)

A statement containing this IF condition, will trigger if someone actually places a call to the Micro Commander number. The user has the option to select which group of senders (originators) are able to cause the the statement to trigger.

The user can choose between the following three options:

- From Any number
- From Any number in the list
- From one specific number

Thus, if the user chooses “From any number”, then literally any call from any number will cause the statement to trigger (This will include calls from private numbers). The same applies to the remaining options, provided their conditions are met.

Please Note: If anyone of the other two options are selected, and a voice call is made from a private number, the statement will not trigger.

As soon as the statement triggers, the Micro Commander will hang up (if option is selected). This is of importance, because it allows the user to have some sort of feedback that the Micro Commander has in fact responded to the call.

Since the Micro Commander answers the call for a split second, it is cost effective. This type of statement option is very handy to use for tasks of high importance, for instance the arming of an alarm system.

If the “Stay on” call option is selected, the Micro Commander will hold the call until the caller ends the call.

Please Note : If the “Stay On” call option is selected it should be defined in the last “IF Voice Call is Received” behaviour statement (if any exist).

8.1.3. IF Input

A statement containing this IF condition, will trigger if the selected input changes according to specification.

The user can choose between the following seven options.

- Goes Active (Trigger on rising edge)
- Goes Inactive (Trigger on falling edge)
- Changes State (Trigger on rising or falling edge)
- Goes Active, remaining Active for longer than
- Goes Inactive, remaining Inactive for longer than
- Is Active (Trigger on high level)
- Is Inactive (Trigger on low level)

Thus, if the user chooses “Goes Active”, then as soon as the specified input changes from inactive to active, the statement will trigger. The same applies to the remaining options, provided their conditions are met.

The user is also able to specify a “Lockout Time” for this statement, which is the time that, after the statement has triggered, it will not allowed to trigger again until this time has elapsed.

If the user selects a “Lockout Time” of zero, the statement will only trigger once (will trigger again when the trigger condition has changed and becomes true again, with the last two options being an exception).

8.1.4. IF Output

This trigger condition is very similar to “IF Input” (8.1.13), as it monitors and output instead of an input.

8.1.5. IF Logic Expression

A statement containing this IF condition, will trigger if the specified logic conditions are met. This allows the user to specify interesting combinations, like input 1 AND input 2 must be active before action is taken.

The user is also able to specify a “Lockout Time” for this statement, which is the time that, after the statement has triggered, it will not allowed to trigger again until this time has elapsed.

The logic options available includes:

- AND : ALL the selected signals become active (TRUE) or ANY of the selected signals become inactive (FALSE)
- OR : ANY of the selected signals become active (TRUE) or ALL of the selected signals become inactive (FALSE)
- XOR : ANY UNEVEN number of the selected signals become active (TRUE) or ANY EVEN number of the selected signals become active (FALSE)

8.1.6. *IF Power Failure Detected*

A statement containing this IF condition, will trigger if the power supplies to the 2.1mm DC jack power connector on the Micro Commander is interrupted.

The user is able to specify a “Lockout Time” for this statement, which is the time that, after the statement has triggered, it will not allowed to trigger again until this time has elapsed.

The user is also able to specify a “Hold Time” for this statement, which is the time that the trigger condition must continuously be true before it will be allowed to trigger.

If the user selects a “Lockout Time” of zero, the statement will only trigger once (will trigger again when the power is restored and fails again).

Please Note: To use this option, the user needs to have a 12V battery connected to the BATT terminals on the Micro Commander. The Micro Commander will operate from the battery in the case of a power failure.

8.1.7. *IF Power Restored*

This trigger condition is the inverse of 8.1.6.

8.1.8. *IF Battery Voltage < X*

A statement containing this IF condition, will trigger if the battery voltage goes below a preset threshold level.

The user is also able to specify a “Hold Time” for this statement, which is the time that the trigger condition must continuously be true before it will be allowed to trigger.

The user is able to specify a “Lockout Time” for this statement, which is the time that, after the statement has triggered, it will not allowed to trigger again until this time has elapsed.

If the user selects a “Lockout Time” of zero, the statement will only trigger once (will trigger again when the voltage goes above and below “X”).

Please Note: To use this option, the user needs to have a 12V battery connected to the BATT terminals on the Micro Commander.

The Micro Commander will operate from the battery in the case of a power failure. While the Micro Commander is powered, the battery will be trickle-charged by the Micro Commander. It is therefore important to note that the battery level will only be checked while a power-failure is in progress.

8.1.9. *IF Prepaid Airtime < X*

A statement containing this IF condition, will trigger if the prepaid airtime goes below a preset threshold level.

The user is able to specify a “Lockout Time” for this statement, which is the time that, after the statement has triggered, it will not allowed to trigger again until this time has elapsed.

The Micro Commander will check the prepaid airtime balance from time to time, and the statement will trigger if the balance is below the selected threshold.

Important: Under the “Settings” Tab in the configuration software, you need to have “DO NOT Check Airtime” **Unchecked**, which is found in “Edit Settings”. Also make sure that the correct network is selected.

8.1.10. *IF time elapsed > X*

A statement containing this IF condition, will trigger every X seconds or minutes.

8.1.11. IF Statement X has not triggered in a certain period

A statement containing this IF condition, will trigger if the referred-to-statement has triggered in a specified period. Thus this type of statement actually monitors the triggering behaviour of another statement.

8.1.12. IF Date/Time = X

A statement containing this IF condition, will trigger on a specific time every day within a specified range of dates, or on every selected day of the week.

The user can choose between the following four options:

1. Everyday
2. Day-of-Week
3. Once per month
4. Specific Date Range

8.1.13. IF Powerup or Reset

A statement containing this IF condition, will trigger as soon as the unit has finished booting up.

8.1.14. IF GSM Signal Strength

A statement containing this IF condition, will trigger as soon as GSM signal strength meets the specified requirements.

The user can choose between the following two options:

- Above X
- Below X

Thus, if the user chooses “Below X”, then as soon as the GSM signal strength goes below the specified threshold, the statement will trigger. The same applies to the remaining options, provided their conditions are met. The same applies to the other option, provided it’s condition is met.

The user is able to specify a “Lockout Time” for this statement, which is the time that, after the statement has triggered, it will not allowed to trigger again until this time has elapsed.

If the user selects a “Lockout Time” of zero and the “Below X” option, the statement will only trigger once (will trigger again when the signal goes above and below “X”).

8.1.15. IF Statement X Triggers

A statement containing this IF condition, will trigger if the referred-to-statement has triggered. Thus this type of statement actually monitors the triggering behaviour of another statement.

8.2. Supported THEN Actions

8.2.1. THEN Change Output

A statement containing this Action, will change the selected output according to specified actions.

The user can choose between the following five actions:

- Activate for a time
- Activate for a time - Pause - Activate for a time
- Activate (Leave Activated)
- De-Activate (Leave De-Activated)
- Change State

If the user chooses:

- “Activate for a time”, it will Activate the selected output for the selected number of seconds specified.
- “Activate for a time - Pause - Activate for a time”, it will Activate the selected output for the selected number of seconds specified. The output will remain off for a selected period, after which it will again activate for the selected number of seconds.
- “Activate (Leave Activated)”, it will Activate the selected output and leave it activated. The inverse applies to “De-Activate (Leave De-Activated)”.
- “Change State”, it will either change the state of the selected output, meaning that it will active it if it was de-activated and vice versa.

8.2.2. THEN Send Message

A statement containing this Action, will send a message via SMS to each of up to 6 selected recipients or a message via Serial port or a message to our server.

The user can choose between the following fourteen options:

- Plain Message
- Input/Output Status
- General Status
- Global Input Status
- Global Output Status
- Please Call Me
- Log Status to Sever

If the user chooses:

- “Plain Message”, it will send a predefined message either via SMS to each of up to 6 selected recipients, via the serial port or to server*.
- “Input/Output Status”, it will send a predefined message(one for active and one for inactive) regarding the status of the selected input or output either via SMS to each of up to 6 selected recipients.
- “General Status”, it will send a general status message either via SMS to each of up to 6 selected recipients containing the following information: date & time, signal strength, firmware version, serial number, airtime remaining, status of mains power.
- *Input Status*”, it will send a message either via SMS to each of up to 6 selected recipients containing the status of the input.
- “Output Status”, it will send a message either via SMS to each of up to 6 selected recipients containing the status of the output.
- “Please Call Me”, it will send a “Please Call Me” message via SMS to each of up to 6 selected recipients .

Please note that the “Please Call Me” will only work if the correct network is selected in the Settings tab of the configuration software.

- “Log Status to Server”, it will send a status message via GPRS to our server to update the status of the Micro Commander on the AirDrive platform. (Log onto [Airdrive](#) to find out more)

The recipient number can be defined in one of the following six ways:

- Not Used
- Last voice call number
- Last sms number
- Reply to originating number (only available with IF conditions 8.1.1 and 8.1.2)
- a predefined number from the “numbers” list
- a new number

The user also has the option to insert special characters into the string to create more complex messages. (See section 10)

8.2.3. THEN Place Voice Call

A statement containing this Action, will place a voice call to each of up to 6 selected recipients. The user is able to specify the time to ring, the number of calls to make as well as the time between calls.

The recipient number can be defined in one of the following five ways:

- Not Used
- Last voice call number
- Last sms number
- A predefined number from the “numbers” list
- A new number

Please Note: If a call is answered, then hung up, subsequent calls for this event will be cancelled.

8.2.4. THEN Enable/Disable Statements

A statement containing this Action, will enable or disable up to a maximum of 8 selected behaviour statements such that it will be allowed to trigger if it is enabled and not be allowed to trigger if it is disabled.

8.2.5. THEN Enable/Disable ALL SMS Sending

A statement containing this Action, will enable or disable ALL SMSes, meaning that if it is enabled it will allow the sending of any SMS messages and if it is disabled it will inhibit the sending of any SMS messages.

8.2.6. THEN Set Multiple Outputs to Pattern

A statement containing this Action, will change the status of multiple outputs to a certain state.

8.2.7. THEN Reset device

A statement containing this Action, will reset the Micro Commander.

9. MULTIPLE ACTIONS TO A SINGLE IF CONDITION

It is often required to have more than a single action to be executed for a single Trigger condition. For instance, if your home alarm is triggered, you may want to activate an output (that in turns switches on a loud alarm or perhaps pulls the trigger on a rigged-up shotgun), and you also want to receive a voice-call and an SMS as well.

The Micro Commander will always execute all statements that are eligible to trigger due to a certain event, in other words, the first statement that is triggered, does not void or “eat up” the event.

So to take our example, we will have a set of statements like:

Statement 1: *IF input 1 becomes Active, THEN Place Voice Call to <your number>*

Statement 2: *IF input 1 becomes Active, THEN Send XYZ via SMS to <your number>*

Statement 3: *IF input 1 becomes Active, THEN Activate Output 1 for 10 minutes*

If input 1 becomes active, all the above statements will trigger, and their associated actions will take place. (The action for the first statement will be executed first)

Alternatively, “IF Statement X Triggers” could have been used. (See 8.1.15)

10. MESSAGE PARAMETERS

The Micro Commander support the use of parameters in predefined messages. This allows the user to insert and refer to certain values in message.

The following is a list of all available parameters (case sensitive) together with their descriptions:

- **\t** – Current time (HH:MM:SS)
- **\d** – Current date (DD/MM/YYYY)
- **\a** – Current analog input reading (0-255)
- **\#** – Unit's serial number
- **\f** – Unit's current firmware version
- **\b** – Battery voltage (in volts)
- **\p** – Current power status of mains
- **\s** – GSM signal strength (in %)
- **\c** – Airtime credit remaining (local currency)
- **\i** – Current status of input (0 = OFF, 1 = ON)
- **\o** – Current status of output (0 = OFF, 1 = ON)
- **\v** – Last received voice call number
- **\m** – Last received message number
- **\q** – Last received message text
- **\r** – Carriage Return (0x0D)
- **\n** – Line Feed (0x0A)

For example:

“Serial no \#'s signal is \%” will send “Serial no 100641-12345's signal is 75%”

11. TIMED OPERATIONS

The Micro Commander supports time constraints, which can be setup for any statement. Time constraints will prevent a statement from triggering outside of the preselected times and days of the week. The Micro Commander can also be configured to trigger a statement at a certain time on a certain date or group of days.

The current time and date can be set in one of two ways, either by SMS or by clicking on the tab **“Set to PC time”** in the software interface under the **“Status Tab”**.

By means of SMS you would send a special SMS message to the Micro Commander, containing the text: **“SETTIME”**. The cellular network supplies the time and date with any message that is sent, and the Micro Commander sets its own time according to this.

Please Note: The Micro Commander will lose its time if power is removed, and no battery backup is used. Upon power-up, if any statement has a time constraint enabled, the Micro Commander will automatically send a message to the first number in the list, requesting a **“SETTIME”** reply so that it can set its time. This message will be sent a maximum of 3 times.

The Micro Commander will not allow any time constrained statement to trigger if the time has not yet been set.

12. PREPAID AIRTIME VOUCHER LOADING

If using a prepaid SIM card, it is recommended that prepaid airtime be topped up via an ATM or via your bank's Internet banking portal. If your network or bank does not support this, you can purchase a normal airtime voucher and remotely send the voucher number to the Micro Commander, which will in turn send the voucher number to the network to top up the airtime.

Your airtime top-up voucher is typically a long number, and when using this voucher number with a normal cellphone, you typically need to frame this number by some preceding and appending text.

For example, with MTN in South Africa, you need to send:

“*141*000000000000#”

where the “141” is network-dependent, and the 000000000000 is the voucher number. This detail is typically provided on the voucher slip.

To send a voucher to the Micro Commander, you simply send it an SMS of the form :

SENDUSD:*141*000000000000# (from any number)

where 000000000000 is the voucher number.

The Micro Commander will receive this and post the voucher number along to the network.

13. FIRMWARE UPDATES

Step 1:

Download the “setup.exe” executable file from our website (<http://www.gsmcommander.com>)

Step 2:

Run the executable file (See 5.6)

Step 3:

Connect Micro Commander to PC via the supplied USB cable

Step 4:

Connect power to the Micro Commander

Step 5:

Run the Utility (Start > All Programs > GSM Commander V7 0101 > Update Firmware)

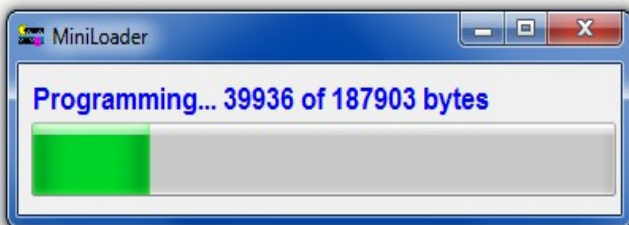
The SmartSetup software will also automatically detect upon startup if the firmware currently loaded on the Micro Commander unit does not match it's current version. It will then prompt you to run the update firmware utility.

Screen 1:



The loader utility will show this screen when started.

Screen 2:



The loader utility will now show this screen, which means the firmware is being updated. The green LED, labeled “**STATUS**” on the Micro Commander, will start flashing.

On completion the loader utility will close and the unit will start up automatically or if you so wish you can disconnect the power.

14. APPLICATION EXAMPLES

14.1. Example 1: Periodic message

In this example we discuss the use of periodic messages to ensure that your Micro Commander produces a billable event on the network on a regular basis. If you use a prepaid SIM card, the network will de-activate your SIM-card if it has not been used for some time (See Section 6.4).

We will create two behaviour statements, The first will send a free-of-charge “please call me” message every day, to give you a confirmation that the unit is up and running. The second will send a Status SMS to your cellphone once a week to ensure that the SIM-card remains active on the network. (The status message also gives you the total airtime remaining)

Configuration:

Using the setup software, we create a behaviour statement that will read as follows:

IF Date / Time is 12:00 THEN Send “Please call me” to +27821231234

A second behaviour statement is created, that reads:

IF Date / Time is 8:00 On every Monday THEN Send Status Message to +27821231234

The Micro Commander could also be configured to only execute an action during a specific date range. A time constraint could also be assigned to any trigger condition.

14.2. Example 2: Monitor alarm

In this example we need to monitor an alarm system, and in the case of an alarm, the Micro Commander must make a voice call and send a message to one or more numbers.

Hardware:

We connect the alarm output (12V signal that drives the siren) to one of our inputs as described in section 5.8. The positive wire from the alarm panel is connected to the +IN terminal, and the negative wire is connected to -IN.

Configuration:

Using the setup software, we create a behaviour statement that will read as follows:

IF Input 1 Goes Active THEN Place voice call to +27821231234

We create a second behaviour statement that will read as follows:

IF Input 1 Goes Active THEN Send “Alarm triggered!” via SMS to +27821231234; +27843214321

The first statement will cause a voice call to be placed to +27821231234 in the event of an alarm. The second statement will cause a notification SMS to be sent to both +27821231234 and +27843214321.

This is an example of how the Micro Commander can have multiple actions triggered by a single event (in this case, an input becoming active). Note that the voice call will not “say” anything when the call is answered.

One will typically use Caller ID to identify the Micro Commander number, and this will be enough to let you know that there is something wrong at home.

14.3. Example 3: Control an appliance

In this example we need to switch a 220V light bulb on or off via a suitable SMS message from a specific number listed on the Micro Commander.

Hardware:

We connect light bulb to a 220V power source via the output 1 contact on the Micro Commander, exactly as described in section 5.9

Configuration:

Using the setup software, we create a behaviour statement that will read as follows:

IF Message is received, containing "Lights on" from 0821231234 THEN Activate Output 1.

We create a second behaviour statement that will read as follows:

IF Message is received, containing "Lights off" from 0821231234 THEN Deactivate Output 1.

14.4. Example 4: Gate / garage door opener

In this example we need to open a gate in response to a missed call from any number in a list of accepted numbers. This is an ideal method to control a communal gate in a complex.

Hardware:

Many gate openers require a pulse to open, and second pulse to close. We will use the output of the Micro Commander to supply this pulse at the position where the open/close switch is normally connected to the opener.

Configuration:

Using the setup software, we create a behaviour statement that will read as follows:

*IF a Voice Call is received from any listed number
THEN Activate Output 1 for 1 Sec, Pause for 20 Sec, Activate again for 1 Sec.*

14.5. Example 5: Contact to Contact relay

In a few instances it may be necessary to transmit the status of a contact to a remote point. Let us use an alarm as example. If the alarm at your home sounds, you may want a warning light to switch on in a remote location and a voice call to be placed to a specified number.

For this example, we will use two Micro Commander units, one at the local alarm system, and another at the remote location.

Local Micro Commander Hardware:

We connect the alarm output (12V signal that drives the siren) to one of our inputs as described in section 5.8. The positive wire from the alarm panel is connected to the +IN terminal, and the negative wire is connected to -IN.

Local Micro Commander Configuration:

Using the setup software, we create the following behaviour statements:

*St1 : IF Input Goes Active THEN send "alarm on" via SMS to +27833341234
St2 : IF Input 1 Goes Active THEN Place Voice Call to +27821121323
St3 : IF Input 1 Goes inactive THEN send "alarm off" via SMS to +27833341234*

The above 3 statements detail two actions to trigger in the event that the input goes active. One is an SMS message to the remote unit, and another is a voice call to a cellphone. In the above statements, +27833341234 is the number of the Micro Commander at the remote location.

Remote Micro Commander hardware:

We use a second Micro Commander unit at the remote location. Here we connect the warning light to output 1 of the Micro Commander so that if the relay is activated, the warning light will turn on. (exactly as described in section 5.9)

Remote Micro Commander configuration:

The configuration of the remote unit will be similar to example 2 (control an appliance). Using the setup software, we create the following behaviour statements:

IF Message is received containing “alarm on” from any listed number THEN Activate Output 1.

IF Message is received containing “alarm off” from any listed number THEN Deactivate Output 1.

15. TROUBLESHOOTING

15.1. Micro Commander setup software reports “Hardware not detected”

This error can have several causes:

Cause 1: Micro Commander not powered properly

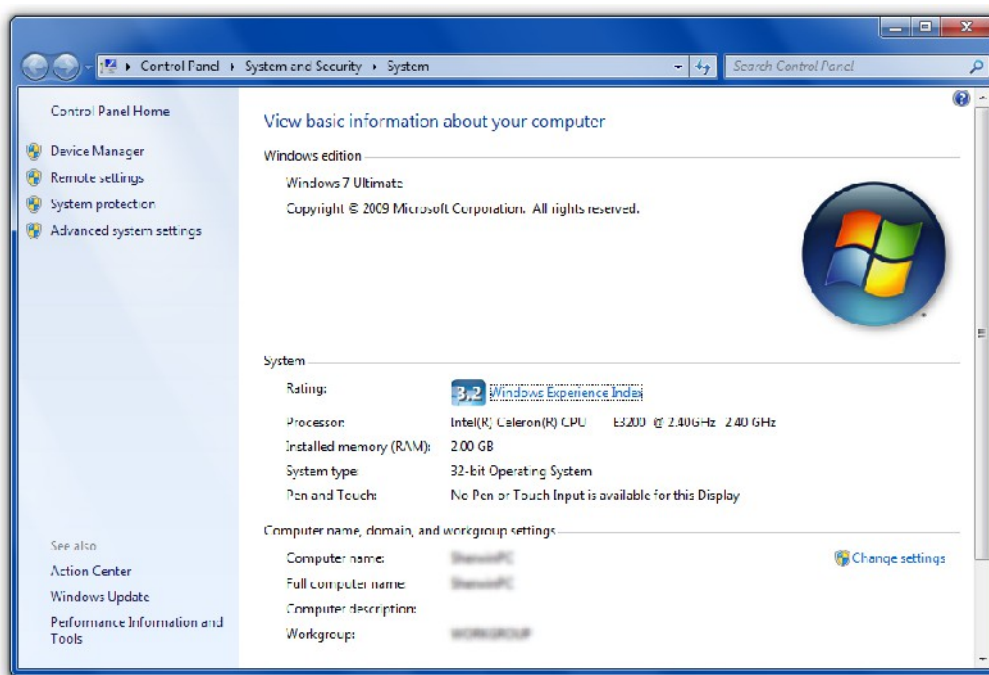
Cause 2: Micro Commander not connected via USB

Cause 3: Micro Commander USB drivers not installed.

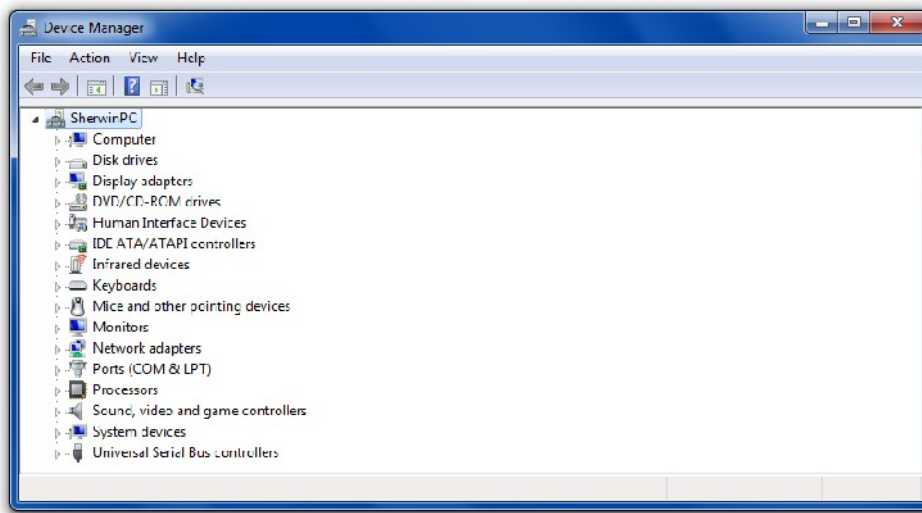
It is a good idea to disconnect all cables from the Micro Commander, and then reconnecting everything (power and USB cable). If the problem persists, please follow this procedure to verify that the drivers are correctly installed:

Step 1: Connect USB Cable to Micro Commander (ONLY USB, and not the Power)

Press “Windows key” and “Pause” simultaneously on your computer keyboard. This will bring up the “System properties” window as below:



Step 2: Select “Device Manager”. This will open the device manager window as below:



Double Click on “Universal Serial Bus(USB) controllers”

In the list of USB controllers, you should see an item called “GSMCommander”.

If this item is not present, the drivers are not installed correctly. To install your drivers, go to *C:\Program Files\GSM Commander V7 0101\drivers\drv_install* and run “GSMC_USBXpressInstaller.exe” or run “Reinstall drivers” (Start > All Programs > GSM Commander V7 0101 > Reinstall drivers). This will reinstall your drivers.

15.2. Micro Commander setup software reports “Could not initialize the internal module”(Also shown by the green Status LED flickering at a vary fast rate)

This is a problem state, and may be caused by a supply voltage that is too low. (The supply must be in the range 10..14V). If this problem persists, the Micro Commander is faulty.

15.3. Micro Commander does not send any SMS messages.

Cause 1: Airtime problem

The airtime on your SIM card may be depleted, or the SIM card may have been de-activated by the network. Refer to Section 5.4 (SIM Card)

Cause 2: Reception problem

You may have bad reception in your area, preventing the unit from connecting to the network. Please check using a regular cellular phone that there shows 1-2 bars of signal right next to the Micro Commander. Refer to Section 5.5 (Antenna)

Cause 3: Bad configuration

You may have configured the unit incorrectly. Please send a status request message to the unit, and see if it responds (Section 5.12). If it does respond, the unit is operating correctly.

15.4. Micro Commander does not display the Airtime value

Cause 1: Incorrect operator selection

You may have chosen the incorrect operator settings under the “SETTINGS TAB” in the software interface. If your operator is not in the list, then choose “Other” and define the airtime checking and please call me numbers respectively (If available).

Cause 2: “Do Not Check Airtime” is enabled

You may have disabled airtime checking by ticking the box labeled “DO NOT Check Airtime” which is located in “Supplementary Data Services” under the “SETTINGS TAB”.

Cause 3 : Reception problem

You may have bad reception in your area, preventing the unit from communicating with the network. Please check using a regular cellular phone that there shows 1-2 bars of signal right next to the Micro Commander. Refer to Section 5.5 (Antenna)

15.5. Micro Commander does not respond to Voice Calls

Cause 1: Caller ID on phone is disabled

Your Caller ID feature on your phone may be deactivated. Please refer to your phone's manual on how to enable this feature.

Cause 2: Bad configuration

You may have configured the unit incorrectly. Make sure the number you are calling from is stored in the “Numbers List” on the Micro Commander.

16. GUARANTEE

The Micro Commander is guaranteed for a period of **24 months** against defects in materials or workmanship. Should your product become defective during the guarantee period it will be repaired or replaced at the sole discretion of **Polygon Technologies** under the following conditions:

A: The unit must not have been opened or otherwise tampered with. If the enclosure of any unit has been opened at all, the guarantee will be null and void.

B: The guarantee does not cover damage resulting from excessive input voltages, lightning, power surges or water ingress.

A decision about issues A and B will be at the sole discretion of **Polygon Technologies**. This guarantee does not provide for shipping costs. This will be for the account of the user under all circumstances.

17. IMPORTANT NOTICE / DISCLAIMER

Herein, “the Company” will mean:

Polygon Technologies CC, its directors, members, employees and agents.

Much effort has been made to ensure the contents of this manual are complete and without errors. Nonetheless, the Company cannot be held liable for any damages directly or indirectly resulting from any errors in this manual.

The Company will under no circumstances be held liable for any injuries/death or damages that result from the use of this product, irrespective of whether such injuries/death or damages resulted from a faulty product or negligence of any kind on the part of the Company.

All Information and images in this manual are proprietary to **Polygon Technologies CC**. The manual as a whole may be distributed and copied freely, but no partial content may be used/copied or distributed in any way. No part of the product (including the hardware, firmware and software) may be copied or reverse-engineered.

Polygon Technologies CC reserves the right to make changes to contents of this manual, without notice, at any time.

18. MANUFACTURER CONTACT DETAILS

Polygon Technologies may be contacted at:

Email: Info@gsmcommander.com

Web: www.gsmcommander.com

Telephone: +27(0)21 9817062

Fax: +27(0)86 6823310

Postal Address: PO Box 1655
Brackenfell
7561
South Africa